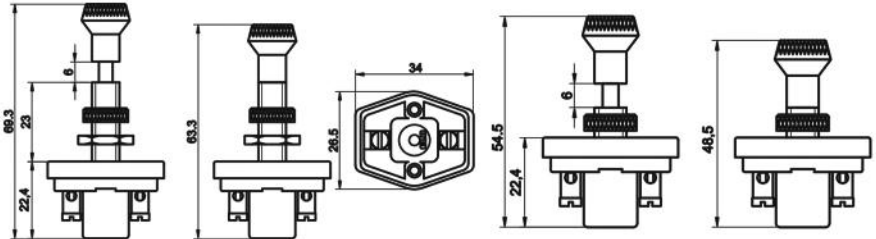


On / Off Switch

Product Code **204.152.001** **Short Shaft**
 204.152.002 **Long Shaft**



Terminal Configuration & Dimensions



Technical Data

	204.152.001	204.152.002
Nominal Voltage	6 / 12 / 24 / 48 / 72V	6 / 12 / 24 / 48 / 72V
Operating Voltage	0-75V	0-75V
Rated Continuous Load	5A	5A
Contacts Arrangement / Form	1 Form A / SPST NO	1 Form A / SPST NO
Contact Material	AgNi10	AgNi10
Mechanical Cycles (On/Off) @ 12V 5A	>100.000	>100.000
Connection Type	Front Panel Mounting Ø8mm	Front Panel Mounting Ø8mm
Panel Thickness	3mm	15mm
Connection Cable Cross Section	≤ 6mm ²	≤ 6mm ²
Vibration	20-200Hz,5g:>10us	20-200Hz,5g:>10us
Mechanical Shock	>10g, 11ms>10us	>10g, 11ms>10us
IP Rating	IP54 DIN IEC60529	IP54 DIN IEC60529
Terminal Material / Plating	CuZn63 / -	CuZn63 / -
Ambient Temperature	-40 / +80 °C	-40 / +80 °C

Product Details

ELO On / Off Switches are manufactured with 2 different thread sizes. In Short Shaft On / Off Switch, the thread size is 7.5 mm and whereas in Long Shaft On / Off Switch it is 22.5 mm.

Cross Codes *

HELLA	HERTH+BUSS
6ED 001 563-001	70590110
6ED 001 563-003	70590320
6ED 001 563-004	70590322

* The products on the cross codes list are in accordance with nominal voltage, rated continuous load and terminal layout. Other technical information may vary.

OEM Part Numbers**

AUDI	FAUN	EATON (Cont'd)	EATON (Cont'd))	JOHN DEERE	RENAULT TRUCKS
KDWHLO9456	1794-677	14030821	14070900	50 70 28	50 00 786 638
AUWARTER	EATON	14060100	14072100	LIEBHERR	TEREX
1506.142.00	14020400	14060200	14072200	6 061 966 08	5350231400
CLASS	14030100	14070100	14080100	NEOPLAN	VOLVO
092 960 11	14030200	14070200	14080200	1102 593 8	881021
DEMAG	14030700	14070300	14080300	1506.142.00	VW
5712540		14070400	14080400		KDWHLO9456

** OEM part numbers listed are compiled from the information provided by the Original Equipment Manufacturers, open and restricted access third party sources.

Notes

All measurements are in millimeters.

